



PRODUCT CATALOGUE

KNORR-BREMSE PRODUCTS FOR
SCANIA VEHICLES



KNORR-BREMSE

Disclaimer

The information contained in this document is intended for the exclusive use of trained persons within the commercial vehicle industry, and must not be passed on to any third party. All recommendations regarding products and their servicing or usage are with reference to Knorr-Bremse products and should not be considered applicable to products from other manufacturers.

This information does not purport to be all-inclusive and no responsibility is assumed as a result of its use. We cannot accept any liability nor offer any guarantee regarding data accuracy, completeness or timeliness. The information does not represent any guarantee or ensured characteristics of the Products or Systems described. No liability can be accepted based on the information, its use, recommendations or advice provided. In no event may we be held liable for any damage or loss except in the case of wilful intent or gross negligence on our part, or if any mandatory legal provisions apply.

Any legal disputes arising from the use of this information shall be subject to German law.

Note: If service work is carried out on the vehicle, it is the responsibility of the workshop to ensure the vehicle is fully tested and in full functional order before the vehicle is returned into service. Knorr-Bremse accepts no liability for problems caused as a result of appropriate tests not being carried out.

This disclaimer is an English translation of a German text, which should be referred to for all legal purposes.

Revision Details

Rev. 000 February 2021 New document

SAFETY AND ENVIRONMENT GUIDELINES.	5
INTRODUCTION.	6
1. KNORR-BREMSE RANGE	7
COMPRESSORS	7
Monoblock Compressor twin - Liquid cooled cyl. head	7
Split Block Compressor single - Liquid cooled cyl. Head	7
Compressor twin with Clutch or Gearbox.	8
Spare Kits for Monoblock Compressors	8
Spare Kits for Split Block Compressors.	9
Spare Kits for Compressor with clutch or gearbox	9
Spare Kits for Hybrid or Dry Running Compressors.	9
Components for Compressors.	10
ELECTRONIC SYSTEMS	10
EBS 2.	10
EBS 5.	11
EBS 7.	11
Electronic Levelling Control Modules (ELC).	12
Wheel Speed Sensors	12
EBS/ ELC Pressure Sensors	12
ESP Steering Angle Sensors	12
ESP Yaw Rate Sensors	13
Other related products	13
ATC Valves	13
Electro-pneumatic parking Brake.	13
Spare Kits for Electronics	14
Components for Electronics	14
VALVES	15
Hand Brake Valves	15
Foot Brake Valves	15
Trailer Control Valves.	15
Load Sensing Valves Mech.	15
Leveling Valves	16
Pressure Limiting Valves.	16
Indicating and warning devices.	16
Distributional Control Valves.	17
Quick Release Valves.	17
Check Valves	17
Other related products	17
Spares Kits for Valves/ Pedal Unit	18

CONTENTS

AIR TREATMENT	18
Cartridges	18
Filters	18
Unloader Valves, Governors	19
Antifreeze Devices	19
Mechanical Components for Air Treatment	19
Silencers	19
Other related products	20
WHEEL-END	20
Air Disc Brakes SB7, 22,5" radial	20
Air Disc Brakes SN7 22,5" axial	21
EconX® Calipers 22,5" radial	22
Brake Pad Kits	22
Brake Discs	22
Service Kits	23
ACTUATORS	24
Brake Chamber (Disc) OBC	24
Spring Brakes S-Cam / NG3	24
Spring Brakes (Disc / NG3)	25
Operating Cylinder	25
Spare Kits / Spare Parts for Actuators	25
DRUM BRAKE	26
Slack Adjusters Manual	26
2. TRUCKSERVICES RANGE	27
TURBOCHARGERS	27
FAN CLUTCHES	31
Fan clutch assemblies	32
Fan Wheels	33
STARTERS	33
ALTERNATORS	34
FILTERS	35
Air Filters	35
Cabin Filters	35
Fuel Filters	36
Oil Filters	36

SAFETY AND ENVIRONMENT GUIDELINES

Note: The safety advice listed below is applicable to general service and diagnostic work on braking systems. Also observe any recommendations from the axle or vehicle manufacturer concerning towing, jacking-up and securing the vehicle.

CAUTION: KNORR-BREMSE IS NOT LIABLE FOR ANY INJURIES OR DAMAGES CAUSED BY IMPROPER USE OF SPECIFIED SERVICE KITS AND/OR SERVICE TOOLS. FURTHERMORE, MISUSE OF TOOLS OR INCORRECT INSTALLATION OR APPLICATION OF SERVICE KITS MAY RESULT IN DAMAGE OR POTENTIALLY UNSAFE VEHICLE OPERATIONS. IN THIS CASE, KNORR-BREMSE DOES NOT HAVE ANY WARRANTY OBLIGATIONS.

Before and whilst working on or around compressed air systems and devices, the following precautions should be observed, along with the many hazard notes contained throughout the document:

- 1 Always wear safety glasses when working with air pressure.
- 2 Never exceed the vehicle manufacturer's recommended air pressures.
- 3 Never look into air jets or direct them at anyone.
- 4 Never connect or disconnect a hose or line containing pressure; it may whip as air escapes.
- 5 When removing or servicing a product, ensure all pressure related to the specific system it is contained in has been depleted to 0 bar. Be aware that if the vehicle is equipped with an air dryer system, it can also contain air pressure along with its purge reservoir, if fitted, even after pressure has been drained from the other reservoirs.
- 6 If it is necessary to drain the air pressure from reservoirs, etc., keep away from brake actuator push rods and levers since they may move as system pressure drops. On vehicles fitted with air suspension, it is advised when undertaking such work, to support the chassis from sudden lowering and therefore prevent any possibility of being trapped between the chassis and axle or ground.
- 7 Park the vehicle on a level surface, apply the parking brakes, and always chock the wheels as depleting vehicle air system pressure may cause the vehicle to roll.
- 8 When working under or around the vehicle, and particularly when working in the engine compartment, the engine should be shut off and the battery disconnected. Where circumstances require that the engine be running, EXTREME CAUTION should be taken to prevent personal injury resulting from contact with moving, rotating, leaking, heated or electrically charged components. Additionally, it is advisable to place a clear sign on or near the steering wheel advising that there is work in progress on the vehicle.
- 9 When working on vehicles equipped with air suspension, to guard against injury due to unexpected downward movement of the chassis caused by sudden pressure loss in the suspension system, ensure that the vehicle chassis is mechanically supported with a 'prop' between the chassis and the axle or between the chassis and the ground.
- 10 Examine all pipework for signs of kinks, dents, abrasion, drying out or overheating. Be aware that kinks in pipework may result in air pressure being trapped in the pipework and associated equipment. Replacement hardware, tubing, hose, fittings, etc. must be of equivalent size, type and strength as original equipment and be designed specifically for such applications and systems. Check the attachment of all pipework; it should be installed so that it cannot abrade or be subjected to excessive heat.
- 11 Components with stripped threads or damaged/corroded parts must be replaced completely. Do not attempt repairs requiring machining or welding unless specifically stated and approved by the vehicle or component manufacturer.
- 12 Never attempt to install, remove, disassemble or assemble a device until you have read and thoroughly understood the recommended procedures. Some units contain powerful springs and injury can result if not properly dismantled and reassembled. Use only the correct tools and observe all precautions pertaining to use of those tools.
- 13 Before removing any device note its position and the connections of all pipework so that the replacement/serviced device can be properly installed. Ensure that adequate support or assistance is provided for the removal/installation of heavy items.
- 14 Use only genuine replacement parts, components and kits as supplied by Knorr-Bremse or the vehicle manufacturer. Only use the recommended tools as specified in related Knorr-Bremse instructions.
- 15 The serviced or replaced product must be checked for correct function and effectiveness.
- 16 If products have been dismantled, serviced or replaced, whose performance could affect braking performance or system behaviour, this should be checked on a roller dynamometer. Bear in mind that a lower performance may be experienced during the bedding-in phase if new brake pads/linings and/or brake discs/drums have been fitted.
- 17 The use of impact screwdrivers or impact wrenches in conjunction with Knorr-Bremse service tools for air disc brakes is not permitted. The service tools are not designed for such use. It is likely that the tools or the vehicle will be damaged and there is a serious risk of injury – see Caution above.
- 18 Do not use compressed air to clean the disc brake. Avoid air contamination of brake dust.
- 19 Prior to returning the vehicle to service, make certain that all components and the complete brake systems are leak free and restored to their proper operating condition.

Welding

To avoid damage to electronic components when carrying out electrical welding, the following precautions should be observed:

- 1 In all cases, before starting any electrical welding, remove all connections from any electronic control units or modules, noting their position and the order in which they are removed.
- 2 When re-inserting the electrical connectors (in reverse order) it is essential that they are fitted to their correct assigned position - if necessary this must be checked by PC Diagnostics.



Disposal of Waste Equipment by Business Users in the European Union

This symbol on the product, packaging or in user instructions, indicates that this product must not be disposed of with other general waste. Instead, it is your responsibility to dispose of the waste electrical and electronic parts of this product by handing them over to a company or organisation authorised for the recycling of waste electrical and electronic equipment. For more information about arrangements for waste equipment disposal please contact your Knorr-Bremse distributor or local Knorr-Bremse representative.

INTRODUCTION

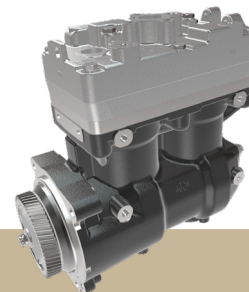
This catalogue is designed to provide an overview of the range of Knorr-Bremse products that are compatible with Scania vehicles. Please note that whilst every effort has been made to ensure the accuracy of the data in this catalogue, we reserve the right to amend or change this information without notice.

The listed cross-references to the manufacturer's numbers in each table are only intended as a guide for identifying the relevant IAM part numbers. The information is supplied without liability.

The latest version of available documents can be found on our website: truckservices.knorr-bremse.com where they can be downloaded free of charge.

1. KNORR-BREMSE RANGE

COMPRESSORS



Monoblock Compressor twin - Liquid cooled cyl. head

OE reference	IAM preferred product	Description	EconX variant	Info
1348919	1189106	440cc Compressor		
1348920	1189107	440cc Compressor	KZ996/2X50	
1303226	I97492000	440cc Compressor	I97492X50	
1303227	I97493000	440cc Compressor	I97493X50	
1381951	II32842000	440cc Compressor	II32842X00	
1470304	K002046000	600cc Compressor	K002046X00	
1513115	K002975000	600cc Compressor	K002975X00	
1882222	K009580000	720cc Compressor	K009580X00	
1767161	K009581000	720cc Compressor		
1796663	K016615000	600cc Compressor	K016615ES	
1745702	K055985N00	720cc Compressor	K055985X00	
2032484				
2024410	K155389N00	720cc Compressor	K155389X00	
2760239				
1901247	K155390N00	720cc Compressor		
2024411				
2760240				
2633000	K155404N00	720cc Compressor		
2760242				
2024412	K172097N00	720cc Compressor	K172097X00	
2792819				
1880194	K172098N00	720cc Compressor	K172098X00	
2024413				
2792820				
1918307	K181219N00	720cc Compressor		
2792818				
1327231		440cc Compressor	KZ396/3X50	

Split Block Compressor single - Liquid cooled cyl. Head

OE reference	IAM preferred product	Description	EconX variant	Info
1390026	II33510	300cc Compressor		

COMPRESSORS *continued...***Compressor twin with Clutch or Gearbox**

OE reference	IAM preferred product	Description	EconX variant	Info
2493283	K155402N00	Clutch Compressor		Service Manual Y335834
2619530				
2760241				
1936297	K173752N00			
2477703				
2577075				
2760238				
2767828				

Spare Kits for Monoblock Compressors

OE reference	IAM preferred product	Description	EconX variant	Info
1315372	I81015004	Valve Plate Kit		
1315377	I810150061			
1409325	I81169004	Piston Kit		
1315376	I869090051	Gasket Kit		
1542159	II159920051	Cylinder Head Gasket Kit		
1376279	II159920063	General Service Kit		
1376280	II326840061			
1760871	K012086			
1864986	K018809			
1919356	K034874K50	ESS Kit		
1932013	K036087K50	Pump Support		
2033910	K051470K50	Cover		
2667742	K083714K50	Valve Plate Kit		Discontinued product - while stocks last
2667755	K083715K50	General Service Kit		
2667753	K186586K50	ESS Kit		
2845453	K189906K50	Cylinder Head Kit		
1376272	SEB01033004	Valve Plate Kit		
1376274	SEB01106004	Cylinder Head Kit		
1391386	SEB011380061			
1376275	SEB013090065	Pump Support		
1424766	SEB01444004	Cylinder Head Kit		
1315279	SEB22514	Piston Kit		
1315299	SEB22587	Cylinder Head Kit		
1542160	SEB22596	General Service Kit		
1385824	SK2806/1	Filter Element		

KNORR-BREMSE RANGE

COMPRESSORS continued...

Spare Kits for Split Block Compressors

OE reference	IAM preferred product	Description	EconX variant	Info
1409317	II335090051	Gasket Kit		
1409319	II33509004	Valve Plate Kit		

Spare Kits for Compressor with clutch or gearbox

OE reference	IAM preferred product	Description	EconX variant	Info
2271847	K097449K50	Valve Plate Kit		
2271848	K097450K50	Piston Kit		
2271851	K097451K50	General Service Kit		
2271849	K097453K50	Clutch Kit		
2271850	K097454K50	Pinion Kit		
2271845 2845456	K189905K50	Cylinder Head Kit		

Spare Kits for Hybrid or Dry Running Compressors

OE reference	IAM preferred product	Description	EconX variant	Info
2571671	K171123K50	Compressor and Coupling		
2720743	K149537K50	Oil Separator Cartridge		
2720756	K149546K50	Oil Cooler		
2720758	K171117K50	Wiring Harness		
2755309	K171124K50	Air Filter Kit		
2755310	K171127K50	Air Filter		
2755312	K171113K50	Flange		
2755313	K149559K50	Oil plug Kit		
2755375	K171122K50	E-Motor and coupling Kit		
2770665	K171126K50	Oil Can		

COMPRESSORS *continued...***Components for Compressors**

OE reference	IAM preferred product	Description	EconX variant	Info
232062	KW3214/1	Bearing Bush		
1315291	B55661	O-Ring		
1315299	SEB22587	Cylinder Head		
1322813	KZ426/2SP	Valve Plate		

ELECTRONIC SYSTEMS**EBS 2**

OE reference	IAM preferred product	Description	EconX variant	Info
1428512	0486200008N50	EBS Foot Brake Module	0486200008X50	Neo Diagnostics
1499798	0486205014N50	EBS Trailer Control Module	0486205014X50	
1499799	0486203025N50	EBS One Channel Module	0486203025X50	
1499802	0486204019N50	EBS Two Channel Module	0486204019X50	
1506029	0486106021N50	EBS ECU		



KNORR-BREMSE RANGE

ELECTRONIC SYSTEMS continued...

EBS 5



OE reference	IAM preferred product	Description	EconX variant	Info
1793647	K044694N50	EBS Foot Brake Module		Neo Diagnostics
1879274	K020623N50	EBS Trailer Control Module	K020623X50	
1879275	K021202N50	EBS One Channel Module	K021202X50	
1879280	K032014N50	EBS Two Channel Module	K032014X50	
1879281				
1888378	0486106310N50	EBS ECU		
1888379				
1891378	K032014N50	EBS Two Channel Module	K032014X50	
1942899	K044696N50	EBS Foot Brake Module	K044696X50	
1943011	K044694N50			
2029182	0486106310N50	EBS ECU		
2029183				
2029746				
2029747				
2116106	0486106329N50			
2239955				
603774500C	K044696N50	EBS Foot Brake Module	K044696X50	

EBS 7



OE reference	IAM preferred product	Description	EconX variant	Info
2263004	0486110502N50	EBS ECU		Neo Diagnostics
2447822				
2263005				
2447824				
2594185				
2594187				
2561589				
2561590				
2789422				
2789427				
2263181	K055628N50	EBS Foot Brake Module		
2263182	K050214N50	EBS One Channel Module		
2263183	K125218N50	EBS Two Channel Module		
2263184				
2447835				
2199282	K103131N50	EBS Trailer Control Module		

*ELECTRONIC SYSTEMS continued...***Electronic Levelling Control Modules (ELC)**

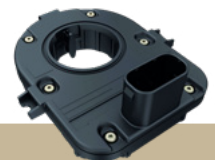
OE reference	IAM preferred product	Description	EconX variant	Info
489555	0504004109000	ELC ECU		Neo Diagnostics
481830	0501100029000	ELC Valve Block		
481831	0501100041100			
481832	0501100038100			

Wheel Speed Sensors

OE reference	IAM preferred product	Description	EconX variant	Info
1356604	0265050112000	Wheel Speed Sensors		
483548	0486000105000			
483549	0486000106000			
1874642	0486002004N00			

EBS/ ELC Pressure Sensors

OE reference	IAM preferred product	Description	EconX variant	Info
1362168	0484205003750	Pressure Sensor		
2214031	K060758N00			

ESP Steering Angle Sensors

OE reference	IAM preferred product	Description	EconX variant	Info
2262387	K097326N50	Steering Angle Sensor		EBS7
1427269	K097327N50	Steering Angle Sensor		EBS5 and EBS7
2089325				
2802742				

KNORR-BREMSE RANGE

ELECTRONIC SYSTEMS continued...



ESP Yaw Rate Sensors

OE reference	IAM preferred product	Description	EconX variant	Info
1441153	0486020007N50	Yaw Rate Sensor		
1891377	K020568N50			

Other related products



OE reference	IAM preferred product	Description	EconX variant	Info
1385440	0484206002000	Solenoid Valve		

ATC Valves



OE reference	IAM preferred product	Description	EconX variant	Info
1120891	0481511002000	Solenoid Valve		

Electro-pneumatic parking Brake



OE reference	IAM preferred product	Description	EconX variant	Info
2335316	K115007V01N50	Electronic parking brake		Neo Diagnostics; Module will be launched in Q1 2021
2593520				
2642702				
2664004				
2846749				
2860635	K114939V01N50			
2335315				
2593518				
2642764				
2664005				
2846748	K119524V01N50			
2860637				
2336929				

ELECTRONIC SYSTEMS continued...**Electro-pneumatic parking Brake** continued ...

OE reference	IAM preferred product	Description	EconX variant	Info
2593521	K119524V01N50	Electronic parking brake		Neo Diagnostics; Module will be launched in Q1 2021
2642766				
2664006				
2846816				
2860638				

Spare Kits for Electronics

OE reference	IAM preferred product	Description	EconX variant	Info
1482124	K000846K50	Cover		
1526859	1507010022000	Valve Seat		
1526860	1507010031000	Valve Plate Kit		
1857015	K000847K50	Silencer		
1884439	1507010039000	Solenoid		
2310063	K098806K50	Holder		
2310074	K098807K50	Holder		
2416734	K045926K50	Covering Cap		
2416984	K041964K50	Silencer		

Components for Electronics

OE reference	IAM preferred product	Description	EconX variant	Info
488420	1487010264000	Rotary Knob		
1504325	Z005861	Stopper		
1513148	Z005860			
2789111	K109136K50	Closing Cap		

KNORR-BREMSE RANGE

VALVES



Hand Brake Valves

OE reference	IAM preferred product	Description	EconX variant	Info
1324427	DPM98A	Hand Brake Valve		
1324428	DPM91A			



Foot Brake Valves

OE reference	IAM preferred product	Description	EconX variant	Info
455836	DX71BX	Foot Brake Valve		
461159	DX81D			
469052	DX80D			
1314047	DX70C			
1324664	0481064603000			
1451618	DX81E			
1778743	DX80E			



Trailer Control Valves

OE reference	IAM preferred product	Description	EconX variant	Info
1762301	0481010034100	Trailer Control Valve		



Load Sensing Valves Mech.

OE reference	IAM preferred product	Description	EconX variant	Info
1338102	1186938	Load Sensing Valve (Mech)		

*VALVES continued...***Leveling Valves**

OE reference	IAM preferred product	Description	EconX variant	Info
475110	II32764	Leveling Valve		
475111	II32765			
1380814	II32763			

Pressure Limiting Valves

OE reference	IAM preferred product	Description	EconX variant	Info
322924	AC152DX	Pressure Limiting Valve		
362425	0481009018000			
367739	AC155A			
436775	0481009034000			
475943	AC155F			
0475944	AC155D			
1320403	0481009057000			
1334846	0481009029000			
1371429	AC155B			
1374318	AC155E			
1523674	048100910222E			
1762299	0481009026000			
1914109	K035707N00			

Indicating and warning devices

OE reference	IAM preferred product	Description	EconX variant	Info
361589	267037	Pressure Switch		
1761543	295491N	Pressure Indicator		
1766490	272295	Pressure Switch		

KNORR-BREMSE RANGE

VALVES continued...

Distributional Control Valves



OE reference	IAM preferred product	Description	EconX variant	Info
423964	0481007022000	3/2 Control Valve		
488419	0484351012000	4/2 Control Valve		

Quick Release Valves



OE reference	IAM preferred product	Description	EconX variant	Info
1350232	K192826N00	Quick Release Valve		will replace 27499 from April 2021
1422152	K192832N00			will replace KX2552 from April 2021

Check Valves



OE reference	IAM preferred product	Description	EconX variant	Info
219509	KW3205/1	Single Check Valve		
290017	295358	Double Check Valve		
292088	0500100006000	Check Valve		
303497	KW4648/1	Single Check Valve		
2274810	K019253N00			

Other related products

OE reference	IAM preferred product	Description	EconX variant	Info
1411603	KY1482/8	Supply Dump Valve		

*VALVES continued...***Spares Kits for Valves/ Pedal Unit**

OE reference	IAM preferred product	Description	EconX variant	Info
319479	SK2801/1	General Service Kit		
392133	1487010221000	Spares Kit		
392216				
1374604	076630802000	General Service Kit		
1374605	076619601000			
1374606	076637004000			
1849284	K018321	Spares Kit		

AIR TREATMENT**Cartridges**

OE reference	IAM preferred product	Description	EconX variant	Info
1932719	K039454	Cartridge 39x1.5RH	K039454X00	
2131090	K039453	Cartridge 39x1.5LH	K039453X00	
2562323		Cartridge G1 1/4 hex	K115979X00	

Filters

OE reference	IAM preferred product	Description	EconX variant	Info
237628	1427432000000	Air Filter	K115979X00	

KNORR-BREMSE RANGE

AIR TREATMENT continued...

Unloader Valves, Governors

OE reference	IAM preferred product	Description	EconX variant	Info
257772	274829	Governor Valve		
333851	267098			
1107082	1186544			

Antifreeze Devices

OE reference	IAM preferred product	Description	EconX variant	Info
295469	0484451005000	Alcohol Injector		Discontinued product - while stocks last

Mechanical Components for Air Treatment

OE reference	IAM preferred product	Description	EconX variant	Info
319308	DS508/3	Grease		

Silencers

OE reference	IAM preferred product	Description	EconX variant	Info
339877	0484210001000	Silencer		
339878	0484210002000			
1313855	0484210006000			
1412087	0484210010000			



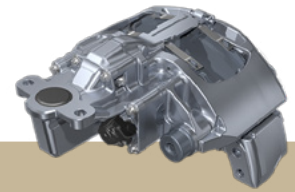
AIR TREATMENT continued...

Other related products

OE reference	IAM preferred product	Description	EconX variant	Info
309164	SK2767/3	Gasket Kit		Discontinued product - while stocks last
380828	1487010199000	General Service Kit		

WHEEL-END

Air Disc Brakes SB7, 22,5" radial



OE reference	IAM preferred product	Description	EconX variant	Info
1757011	K002962	Caliper - Rationalized	K147310X50	For a professional service and maintenance Knorr-Bremse recommends to use the ADB Tool case K158880K50
2419195				
1757010	K002963	Caliper - Rationalized	K147309X50	
2419194				
1921153	K040940K50	Caliper - Rationalized		
2395646				
1921152	K040941K50	Caliper - Rationalized		
2395645				
2395648	K040943K50	Caliper - Rationalized	K147316X50	
2395647	K040944K50	Caliper - Rationalized	K147315X50	
1903436	K040945K50	Caliper - Rationalized		
1913999				
1921151				
2264224				
2264228				
2534806				
2534809	K040946K50	Caliper - Rationalized		
1903435				
1914000				
1921150				
2264211				
2264230				
2534805				
2534807				



KNORR-BREMSE RANGE

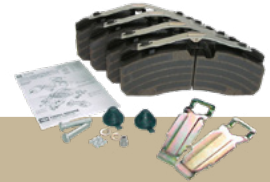
WHEEL-END continued...

Air Disc Brakes SN7 22,5" axial

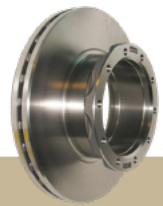
OE reference	IAM preferred product	Description	EconX variant	Info
1903071	K040953K50	Caliper - Rationalized	K140243X50	<p>For a professional service and maintenance Knorr-Bremse recommends to use the ADB Tool case K158880K50</p> 
1913987				
1928813				
1928817				
1928820				
1946307				
1946309	K040954K50	Caliper - Rationalized	K140242X50	
1903072				
1913986				
1928812				
1928816				
1928821				
1946306	K041389K50	Caliper - Rationalized	K149859X50	
1946308				
1946327				
1928815				
1928819				
1946311				
1946313	K041390K50	Caliper - Rationalized	K149858X50	
1946315				
1946331				
1928814				
1928818				
1946310				
1946312	K040944K50	Caliper - Rationalized		
1946314				
1946330	K040943K50	Caliper - Rationalized		
1921149				
1921154	K146387K50	Caliper - Rationalized		
2187971				
2187978				
2475273				
2645206				
2187969				K146388K50
2187975				
2475272				
2645205				


*WHEEL-END continued...***EconX® Calipers 22,5" radial**

OE reference	IAM preferred product	Description	EconX variant	Info
0573022		Remanufactured Caliper	K140242X50	For a professional service and maintenance Knorr-Bremse recommends to use the ADB Tool case K158880K50
0573023			K140243X50	

Brake Pad Kits

OE reference	IAM preferred product	Description	EconX variant	Info
1856108	K071018K50	Brake Pad Kit		SN7 / SN7-HP
2325212				
1914100	K108461K50			
2325213				

Brake Discs

OE reference	IAM preferred product	Description	EconX variant	Info
1415147	l1371910061	Brake Discs		CN94, Omnicity, Omnalink with ZF-axle
1402272	K000810	Brake Discs		4er Serie, P/R/T
1852817				CN94, Omnicity, Omnalink
				 Brake Disc Measuring Gauge K146719K50 supports you with indicating the current wear of your brake disc"

KNORR-BREMSE RANGE

WHEEL-END continued...



Service Kits

OE reference	IAM preferred product	Description	EconX variant	Info
1798063	II328090062	Guide and Seal Kit		
1906776	K067417K50			
2087143				
2365038				
2286677	K105599K50			
1906779	K133158K50			
2557293				
1756389	K010603	Tappets Kit		Depending on installed brake application the service kit K192251K50 is applicable, for additional information please see Y364590
1759811	K010604			
2557353	K000029	Adjuster Cap Kits		
1794496	K001923	Wear Indicator Kit		
1756388	K010765	Carrier Kits (Brake Carrier)		
1756398	K010058			
1756399	K011315			
1887505	K000943			

ACTUATORS

Brake Chamber (Disc) OBC



OE reference	IAM preferred product	Description	EconX variant	Info
1851931	K006487N00	Brake Chamber (Disc)		
1851932	K006488N00			
1851933	K006489N00			
1851934	K006490N00			
2407874	K137793N00			

Spring Brakes S-Cam / NG3




OE reference	IAM preferred product	Description	EconX variant	Info
2304442	K082537N00	Spring Brake (S-Cam)		
2304443	K082538N00			
2304444	K082539N00			
2304441	K108386N00			
2395243	K108671N00			
2395242	K153961N00			
2395241	K111509N00	Spring Brake (S-Cam)		
571754	K124521N00			
1331411	K124528N00	Spring Brake (S-Cam)		
571755		Spring Brake (S-Cam)		
1331412	K124528N00	Spring Brake (S-Cam)		
2789229		Spring Brake (S-Cam)		
571753	K130256N00	Spring Brake (S-Cam)		
1802696				
571758	K131192N00	Spring Brake (S-Cam)		
1331415				
2419616	K136615N00	Spring Brake (S-Cam)		
2550051	K137927N00			
571705	K162930N00			

KNORR-BREMSE RANGE

ACTUATORS continued...

Spring Brakes (Disc / NG3)



OE reference	IAM preferred product	Description	EconX variant	Info
1739428	K017123N00	Spring Brake (Disc)		
1802656	K017117N00			
1802662	K018093N00			
1802663	K018095N00			
1802664	K018094N00			
2424303	K070524N00			
2488674	K133109N00			
2488676	K133110N00			
2651835	K148675N00			
2810004	K158648N00			
				 <p>Actuator Maintenance Gauge K108806K5 supports you when servicing your actuator</p>

Operating Cylinder



OE reference	IAM preferred product	Description	EconX variant	Info
1112542	0482006014000	Operating Cylinder		

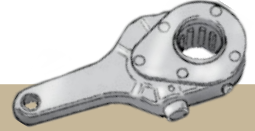
Spare Kits / Spare Parts for Actuators



OE reference	IAM preferred product	Description	EconX variant	Info
143112	234100K	Diaphragm		
203670	234433K			
280651	267086	Yoke		
346851	SK2950/6	Clamp Ring Kit		
1333661	24LS	Diaphragm		
1802698	234189K			
1802699	30LS			
1802777	K111447K50	General Service Kit		
2620353	K170153			

DRUM BRAKE

Slack Adjusters Manual



OE reference	IAM preferred product	Description	EconX variant	Info
1865743	274971	Slack Adjuster (Manual)		
1865744	267083			
1865745	267084			
1865746	295567			
1865747	267026			
1865748	267027			
2032636	272863			

2. TRUCKSERVICES RANGE

TURBOCHARGERS



OE reference	IAM preferred product	Description	EconX variant	Info
252320	KTU124614N50	Turbocharger		corresponding gasket kit: K202230K50
279136				
375500				
571598				
571599				
571600				
571572	KTU124767N50	Turbocharger		corresponding gasket kit: K202240K50
571574				
571575				
1107964				
1115752				
1116196				
349272	KTU124811N50	Turbocharger	KTU124811X50	corresponding gasket kit: K202262K50
358501				
370090				
393457				
571566				
571591				
1100371				
1317661				
1317664				
1351127				
571484	KTU124842N50	Turbocharger	KTU124842X50	corresponding gasket kit: K202240K50
571583				
571593				
1304648				
1319894				
1340173				
1392911	KTU124907N50	Turbocharger		
320038				
571561				
571562				
571597	KTU125074N50	Turbocharger		
1105169				
307372				
320815				
571560				
571570				

TURBOCHARGERS continued...

OE reference	IAM preferred product	Description	EconX variant	Info
571580	KTU125074N50	Turbocharger		
571581				
571602				
1395478	KTU125123N50	Turbocharger		corresponding gasket kit: K202261K50
571486	KTU125598N50	Turbocharger		corresponding gasket kit: K202302K50
1423031				
571483	KTU125657N50	Turbocharger	KTU125657X50	corresponding gasket kit: K202179K50
571539				
1384333				
1423036				
1423037				
1485645				
1849030				
571530	KTU125923N50	Turbocharger	KTU125923X50	corresponding gasket kit: K202180K50
571543				
571610				
571650				
1374503				
1375191				
1383416				
1384862				
1404840				
1423019				
1423020				
571491	KTU126113N50	Turbocharger		corresponding gasket kit: K202179K50
571695				
571715				
572774				
572776				
1382085				
1400412				
1405666				
1430805				
1501641				
1501646				
1524876				
1776559				
1776561				
1501635				
1405667	KTU127135N50			
1501647				
1776560				

TRUCKSERVICES RANGE

TURBOCHARGERS *continued...*

OE reference	IAM preferred product	Description	EconX variant	Info
571719	KTU127143N50	Turbocharger		corresponding gasket kit: K202179K50
572771				
1412940				
1501654				
1501660				
1766751	KTU127145N50	Turbocharger		
1412943				
1501659				
1524887				
1766754				
574391	KTU127370N50	Turbocharger	KTU127370X50	corresponding gasket kit: K202180K50
1425385				
1489615				
571538	KTU127393N50	Turbocharger	KTU127393X50	corresponding gasket kit: K202179K50
1402917				
1423033				
1485649				
1383775	KTU127821N50	Turbocharger		
1501654				
1524882				
1766747				
1766748	KTU127964N50	Turbocharger		
572754				
572763				
572766				
1540738				
1753587	KTU128036N50	Turbocharger		corresponding gasket kit: K202304K50
572764				
1540739				
1753588				
572762	KTU128037N50	Turbocharger		
1756217				
572758				
1525679	KTU128039N50	Turbocharger		corresponding gasket kit: K202311K50
2021487				
1520028	KTU128040N50			
2021488				
1732490	KTU128543N50	Turbocharger		
572753	KTU128642N50	Turbocharger		
1534696				
1543755				

TURBOCHARGERS continued...

OE reference	IAM preferred product	Description	EconX variant	Info
572797	KTU128643N50	Turbocharger		
1778613				
2159063				
1778617	KTU128644N50	Turbocharger		
572796	KTU128723N50	Turbocharger		
1778612				
2159062				
1865358	KTU128821N50	Turbocharger		
572761	KTU129275N50	Turbocharger		corresponding gasket kit: K202304K50
1756218				
1725480	KTU129894N50	Turbocharger		
2040420				
2033791	KTU129940N50	Turbocharger	KTU129940X50	
2454846				
2328179	KTU130166N50	Turbocharger		
2371648				
2080644				
1909621				
2256197				
1756220				
571480	KTU165756N50	Turbocharger	KTU165756X50	corresponding gasket kit: K202179K50
571494				
571548				
575202				
1388058				
1423034				
1423038				
1485648				
570163				
1409514				
1538374				
570162	KTU165770N50	Turbocharger	KTU165770X50	corresponding gasket kit: K202179K50
1538372				
574370	KTU165773N50	Turbocharger	KTU165773X50	corresponding gasket kit: K202180K50
1446732				
1473044				
1443192	KTU165774N50	Turbocharger	KTU165774X50	corresponding gasket kit: K202179K50
1538370				
572751	KTU165787N50	Turbocharger	KTU165787X50	corresponding gasket kit: K202179K50
1534695				
572752	KTU165827N50	Turbocharger	KTU165827X50	corresponding gasket kit: K202299K50
1536617		Turbocharger		

TRUCKSERVICES RANGE

TURBOCHARGERS *continued...*

OE reference	IAM preferred product	Description	EconX variant	Info
2155074	KTU165839N50	Turbocharger	KTU165839X50	corresponding gasket kit: K202057K50
2552125				
572867				
572883				
572901	KTU165901N50	Turbocharger	KTU165901X50	corresponding gasket kit: K202310K50
1849540				
1849541				
1942117				
1949109				
1949110				
2033792				
2033793				
2040423				
2040424				
2191616	KTU165902N50	Turbocharger	KTU165902X50	corresponding gasket kit: K202179K50
1532357				
1949117				
2033790				
2454861	KTU204323N50	Turbocharger	KTU204323X50	corresponding gasket kit: K202179K50
571482				
571494				
1423038				
1423039				

FAN CLUTCHES



OE reference	IAM preferred product	Description	EconX variant	Info
1393424C	K187833N50	Fan clutch		
1402869C	K187834N50			
1471155	K187838N50			
1453967C				
1856995C	K187840N50			
1763618C	K187841N50			
1883610	K187844N50			
2038955				
1883611	K187845N50			
2038956				

FAN CLUTCHES continued...

OE reference	IAM preferred product	Description	EconX variant	Info
2273122	K187847N50	Fan clutch		
374706	K215830N50			
571089				
1321877				
1480769				
1480770				
1368064C	K215831N50	Fan clutch		Estimated availability April 2021
1349551	K215832N50			
1780958C	K215833N50			

Fan clutch assemblies

OE reference	IAM preferred product	Description	EconX variant	Info
571082	K187966N50	Fan clutch assembly		
571092				
1392261				
1393424				
1412398	K187970N50			
1856995	K187971N50			
2052003				
2132266				
2410086				
1453967	K187972N50			
1757881	K187973N50			
1763618	K187974N50			
2052005				
2132264				
2410085				
1453968	K187976N50			
2052007				
1853555	K187977N50			
2078557				
2410082				
1520308	K187979N50			
1776551	K187981N50			
2035611				
1776552	K187982N50			
2035612				
2273117	K187983N50			

TRUCKSERVICES RANGE

FAN CLUTCHES *continued...*

Fan Wheels

OE reference	IAM preferred product	Description	EconX variant	Info
1883609	K188151N50	Fan Wheel		
2035608				
1506288	K188153N50			
374705	K215834N50	Fan Wheel		Estimated availability April 2021
1321876				

STARTERS



OE reference	IAM preferred product	Description	EconX variant	Info
2708317	K184325N50	Starter		
571168	K185417N50	Starter	K185974X50	
571427				
1357709				
579261	K185421N50	Starter	K185977X50	
1447911				
1796026				
2031368				
2148650				
2276131				
183868	K185422N50	Starter	K185978X50	
263356				
310563				
369554				
369555				
571420				
571450				
571451				
571167				
571426	K185471N50	Starter	K186025X50	
571462				
1332903				

ALTERNATORS



OE reference	IAM preferred product	Description	EconX variant	Info
571438	K185702N50	Alternator	K186216X50	
1336136				
1394969				
571414	K185712N50	Alternator	K186226X50	
571415				
571514				
571516				
571517				
571518				
1105367				
1305766				
1307454				
571614	K185713N50	Alternator	K186227X50	
1475569				
1504316				
1763036				
1777299				
1888010				
1884268	K185729N50	Alternator	K186249X50	
518064	K185747N50	Alternator	K186274X50	
1442788				
1475570				
1763035				
354858	K185765N50	Alternator	K186298X50	
357736				
371972				
1117252				
571474				
571688		Alternator	K186284X50	
1516176				

FILTERS

Air Filters



OE reference	IAM preferred product	Description	EconX variant	Info
395773	K117784N50	Air Filter		
1335679	K117804N50			
1387549	K117807N50			
1869988				
1335678	K117808N50			
1387548	K117813N50			
1869987				
1335680	K117827N50			
1485592	K117828N50			
1510905	K129219N50			
1728667	K165288N50			
1728817	K165289N50			
1869990	K165300N50			
1869991	K165301N50			

Cabin Filters



OE reference	IAM preferred product	Description	EconX variant	Info
1913500	K118070N50	Cabin filter		
1913503	K118069N50			
1923323	K129230N50			

*FILTERS continued...***Fuel Filters**

OE reference	IAM preferred product	Description	EconX variant	Info
343144	K117951N50	Fuel Filter		
364624	K117907N50			
586281	K129207N50			
1393640	K117953N50			
1763776	K117954N50			
1780730	K117927N50			
1873016	K117897N50			
1873018	K117896N50			
1907422	K165044N50			

Oil Filters

OE reference	IAM preferred product	Description	EconX variant	Info
550154	K117968N50	Oil Filter		
2022275	K117996N50			
2057893	K117997N50			
1345904	K117998N50			
1347726	K118001N50			
2059778				
1768402	K118045N50			
2002705				

**Knorr-Bremse Systeme für
Nutzfahrzeuge GmbH**

Moosacher Strasse 80

80809 Munich

Germany

Tel: +49 89 3547-0

Fax: +49 89 3547-2767

truckservices.knorr-bremse.com



The information contained herein is subject to alteration without notice and therefore may not be the latest release. Please check our website truckservices.knorr-bremse.com for the latest update or contact your local Knorr-Bremse representative. The figurative mark "K" and the trademarks KNORR and KNORR-BREMSE are registered in the name of Knorr-Bremse AG. Additional terms and conditions apply; please refer to our website truckservices.knorr-bremse.com for full Disclaimer. Note: If service work is carried out on a vehicle based on information provided herein, it is the responsibility of the workshop to ensure the vehicle is fully tested and in full functional order before the vehicle is returned into service. Knorr-Bremse accepts no liability for problems caused as a result of appropriate tests not being carried out. Copyright © Knorr-Bremse AG - all rights reserved, including industrial property rights applications. Knorr-Bremse AG retains any power of disposal, such as for copying and transferring.

Y407537: 000: EN, English: Released:Sucharda_Jan: 2021/04/12-12:59:08